

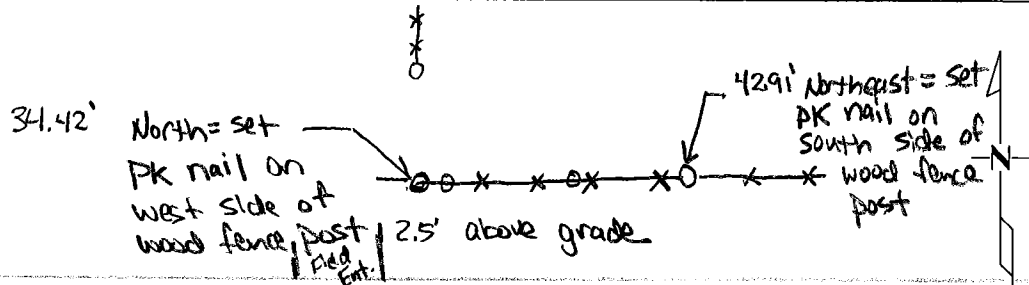
182

### CERTIFICATE OF LOCATION OF GOVERNMENT CORNER

SOUTH QUARTER Corner of Section 32, Township 107 N, Range 43 W  
5<sup>th</sup> Principal Meridian, State of Minnesota, County of MURRAY

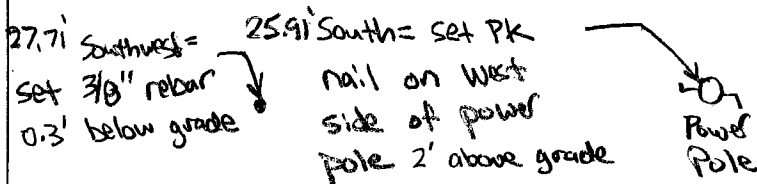
At the corner location shown on the sketch:

- On 9/26/07 found a 12"X12" field stone 1' fast below  
grade at road centerline
- left monument as found     lowered monument     removed monument (explain)
- On 9/26/07 placed a 3/8"X14" rebar capped PLS 40853  
above stone 0.5' below grade



GRAVEL

121  $\Rightarrow$  street



Statement of evidence for this corner location is on back of this page.

I hereby certify that this document was researched and prepared by me or under my direct supervision and that I am a licensed Land Surveyor under the laws of the State of Minnesota.

Signature [Signature] Date 10/22/07 License No. 40853

Title:  Land Surveyor     Professional Engineer     County Surveyor     County Engineer